

## Image Sheet

### Paul Nash

8 April 2017 – 20 August 2017



Paul Nash 1889–1946  
*The Rye Marshes*  
1932  
Ferens Art Gallery  
©Tate



Paul Nash  
*Totes Meer (Dead Sea)*  
1940-41  
Oil on canvas  
© Tate, London 2015



Paul Nash 1889–1946  
*The Shore*  
1923  
Oil on canvas  
Leeds Art Gallery / Bridgeman  
Images  
©Tate  
NB – Usage requires a fee  
paid to Bridgeman Images



Paul Nash  
*Behind the Inn*  
1919-22  
Oil paint on canvas  
© Tate, London 2015



Paul Nash  
*Tench Pond in a Gale*  
1921-2  
Ink, graphite and watercolour  
on paper  
© Tate, London 2015



Paul NASH (1889-1946)  
*Berkshire Downs*, 1922  
Oil on canvas, 76 x 55.5 cm  
Collection: Scottish National  
Gallery of Modern Art,  
bequeathed by Miss Elizabeth  
Watt 1989

We are making a new world

- Being ordered from IWM



Walker Art Gallery – National Museums Liverpool

Awaiting image and permission



Aberdeen art gallery & Museums collections

Wood on the Downs (1929-30)

Awaiting image file



Paul Nash  
Nostalgic Landscape  
1932-38  
Oil on canvas  
Leicester Arts & Museums Service

Received

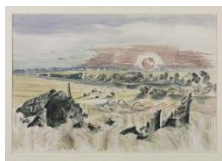


Paul Nash  
Mansions of the Dead  
1932  
Graphite and watercolour on paper  
© Tate, London 2015



PN033

Ferens Art Gallery – Hull Museums



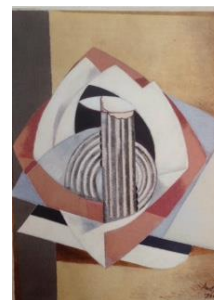
PN020 Tate

Paul Nash  
Bomber in the Corn  
1940  
Graphite and watercolour on paper  
© Tate, London 2015



St Pancras –

Dealing with Bridgeman to secure rights



PN009

Paul Nash  
Kinetic Feature  
1931  
Oil paint on canvas  
© Tate, London 2015



Paul Nash  
The Cliff to the North  
1912  
Pen, Indian ink and grey wash on  
paper  
The Syndics of the Fitzwilliam  
Museum, University of  
Cambridge

### Conditions of use

**These images are available for editorial purposes only:** Contact Richard Smith, Marketing and Communications Officer at [Richard.h.smith@uea.ac.uk](mailto:Richard.h.smith@uea.ac.uk) or call +44 (0) 1603 592 448.

*Please consider these points below when using a copyrighted image:*

*Press use is considered to be moderate use of images to report a current event or to illustrate a review and criticism of the work, as defined by the Copyright, Designs and Patents Act 1988 Chapter 48 Section 30 Subsections (1) - (3). Reproductions which comply with the above do not need to be licensed.*

*Reproductions for all non-press uses or for press uses where the above criteria do not apply (e.g. covers and feature articles) must be licensed before publication. Further information can be obtained at [www.dacs.org.uk](http://www.dacs.org.uk) To licence this image please contact [pressinfo@nationalgalleries.org](mailto:pressinfo@nationalgalleries.org) and your request will be forwarded to the copyright holder.*

*Due to UK copyright law, only applying to UK publications - any articles or press uses which are published outside of the UK and wish to reproduce these images will need to have sort authorisation with the relevant copyright society of that country.*

***Please also ensure that all works that are provided are shown in full, with no overprinting or manipulation.***

**Picture and credit information:**

These images may only be used for publicity purposes in connection only with *Paul Nash* exhibition, 8 April 2017 – 20 August 2017.