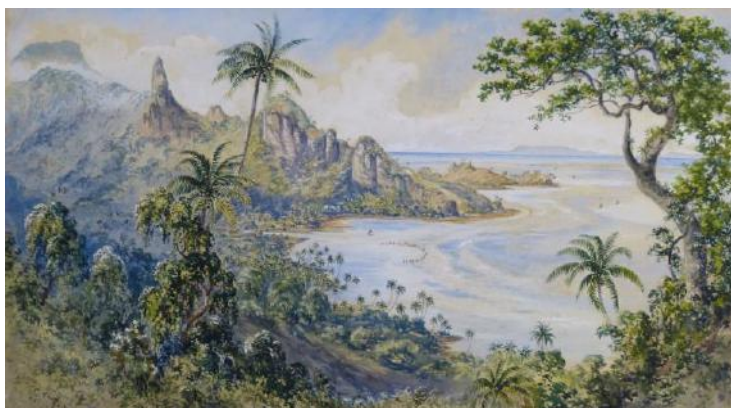


Fiji: Art & Life in the Pacific

The Sainsbury Centre for Visual Arts at the University of East Anglia, Norwich, 15 October 2016 - 12 February 2017

Selection of images available. Contact pr@pipparoberts.com



Constance Gordon Cumming, *View of Tokou, Ovalau*, 1870s watercolour (Museum of Archaeology & Anthropology, U. of Cambridge)



Priest's dish for *yaqona* (kava) in duck form with pedestal stand (Sainsbury Collection, SCVA)



Whale ivory double-figure hook (University of Aberdeen Museums)



Wood headrest with whale ivory inlay (Museum of Archaeology & Anthropology, University of Cambridge)



Right: Club in figural form (The Trustees of the British Museum)



Large decorated pot (MAA, Cambridge)



Plaited pandanus leaf and coir basket (Museum of Archaeology & Anthropology, University of Cambridge)



Painted & stencilled barkcloth, detail (Maidstone Museum & Bently Art Gallery)



Plaited coconut leaf fan, with hibiscus cord (Museum of Archaeology & Anthropology, University of Cambridge)



James Glen Wilson, *Feejeeans Resting*, 1856
watercolour & ink (Private Collection)



Ratu Epenisa Seru Cakobau
paramount chief of Bau, c. 1873



Model temple, coir basketry
& wood (MAA, Cambridge)



Royal club, inlaid with whale ivory, presented by Ratu Cakobau, paramount chief of Bau, to Governor Sir Arthur Gordon, c. 1875-76
(Private Collection)



Whale ivory necklace
(Museum of Archaeology & Anthropology, U. of Cambridge)



Breastplate, whale ivory
& fibre (Trustees of Fiji Museum)



Club with flaring head form
(Maidstone Museum & Bentlif Art Gallery)



Pedestal dish used by priests for drinking
yaqona (kava) (MAA, Cambridge)



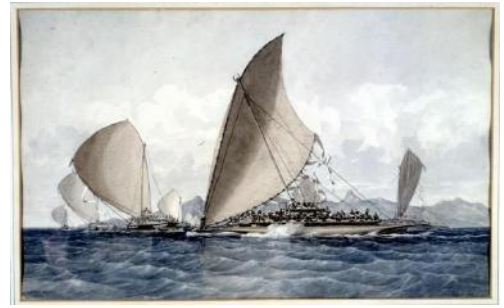
Man-shaped dish for *yaqona* (kava)
(Trustees of the Fiji Museum)



Engraved bamboo nose flute (Maidstone Museum & Bentlif Art Gallery)



The specially-commissioned *drua* (sailing canoe) in Suva Harbour, 2015
(Photo: Steven Hooper)



Two works by Irish artist James Glen Wilson, c1856
(Private Collection)



"The kitchen of a Fijian Chief. Fireplace in centre of the house. Earthenware pots made by hand. No wheel." Watercolour by Constance Gordon Cumming
(Museum of Archaeology & Anthropology, University of Cambridge)



Water vessel (*saqa moli*), mid-19th century
Low fired earthenware
(Sainsbury Centre for Visual Arts, UEA)



Fijian fashion designers use barkcloth (*masi*) to create a gown (left) by Hupfield Hoerder 2012 and ceremonial dress (r) early C21st. Barkcloth (*masi*), coir, shell, feather and cotton beads.
(both items: Sainsbury Research Unit, University of East Anglia)



Above: Long decorated barkcloth sheet (detail), 1870s.
Below: Barkcloth (detail), c1850-1859
(Museum of Archaeology & Anthropology, University of Cambridge / Trustees of the Fiji Museum)